

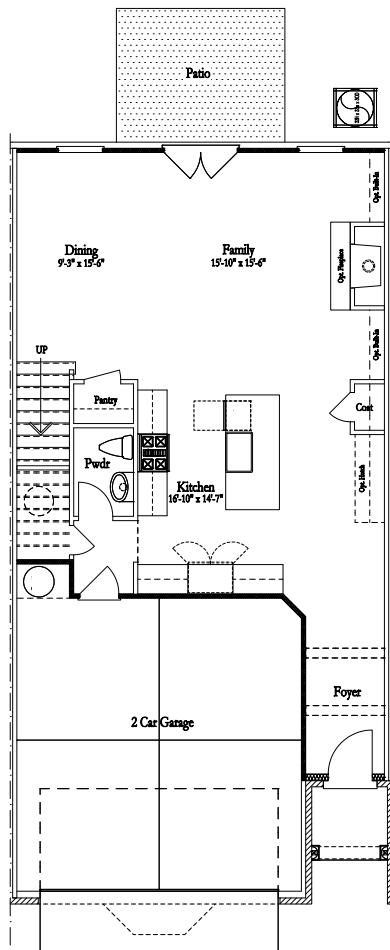
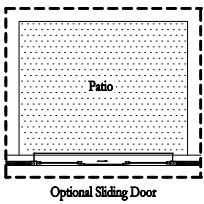


**The Bainbridge II**

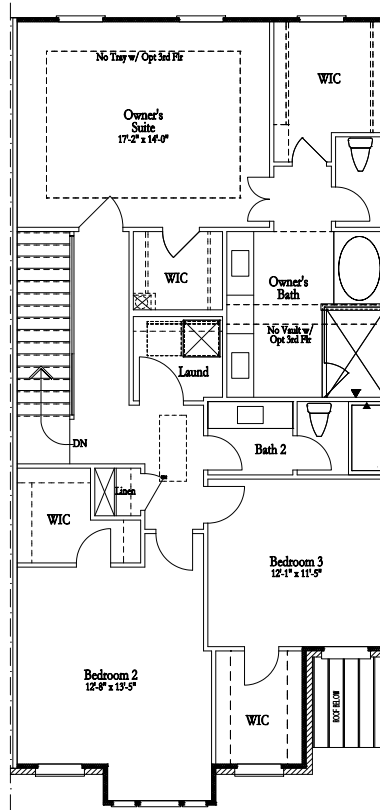
Classic Collection

3 - 4 Bedrooms / 2.5 - 3.5 Baths

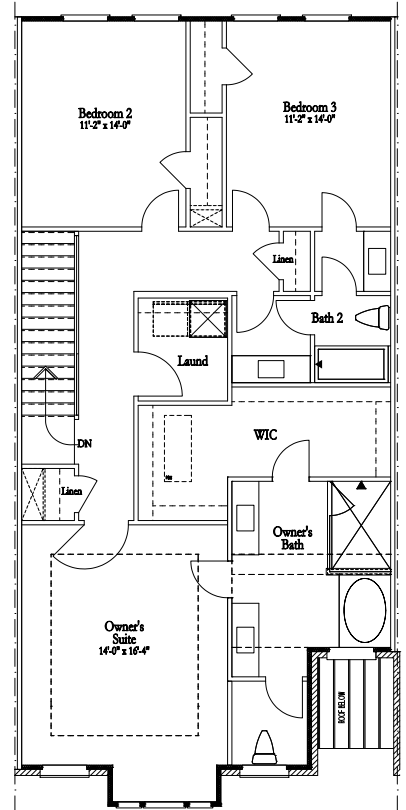
2,127 - 2,652 sq. ft.



First Floor - Slab Home Site



Second Floor  
Owner's Suite Rear



Third Floor  
Owner's Suite Front

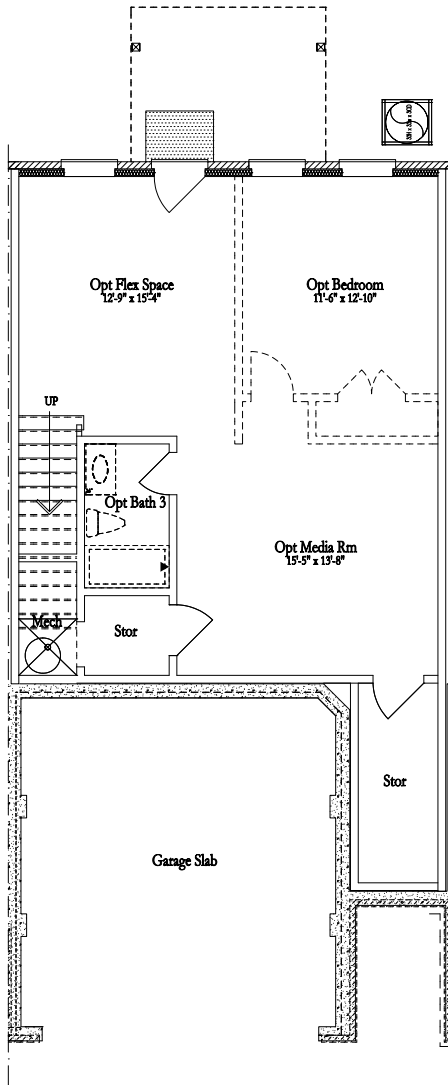


REV. 8/28/17

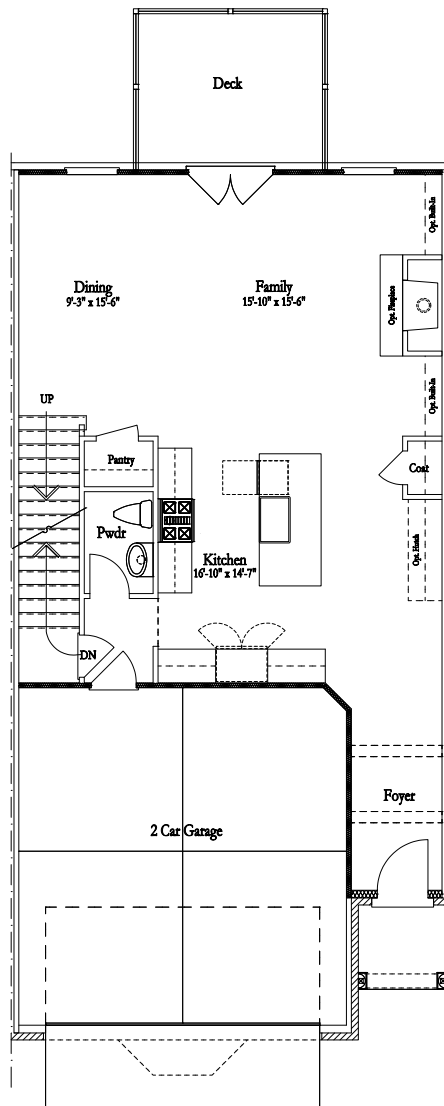
© The Providence Group of Georgia, LLC Please refer to actual blueprints for an accurate representation of plan. Floorplans and elevations subject to change without notice. Window, door and porch locations may vary by elevation. Subject to error, omission or withdrawal.



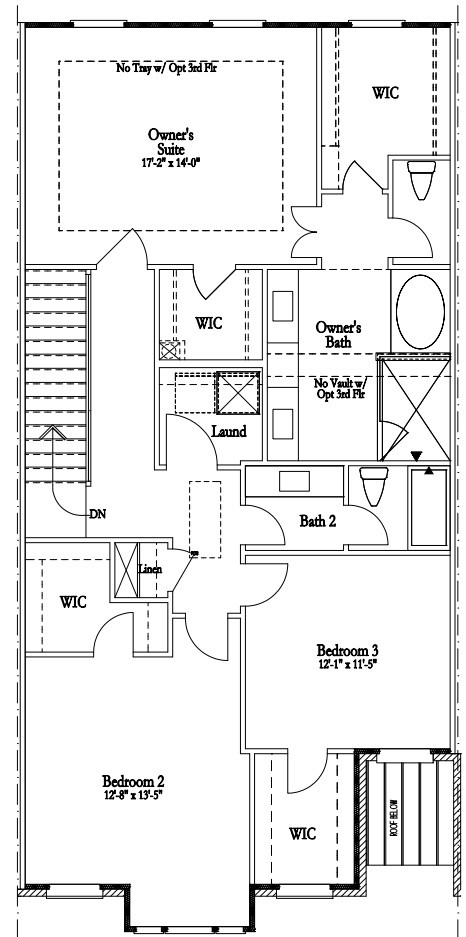
# Basement Layouts



Basement



First Floor



Second Floor  
Owner's Suite Rear

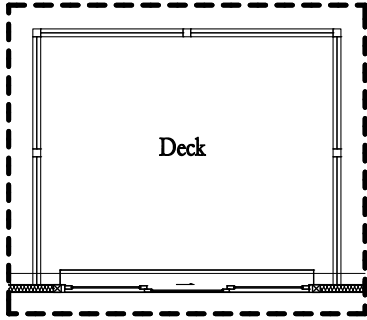


REV. 8/28/17

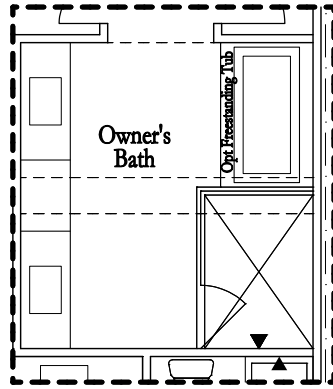
© The Providence Group of Georgia, LLC Please refer to actual blueprints for an accurate representation of plan. Floorplans and elevations subject to change without notice. Window, door and porch locations may vary by elevation. Subject to error, omission or withdrawal.



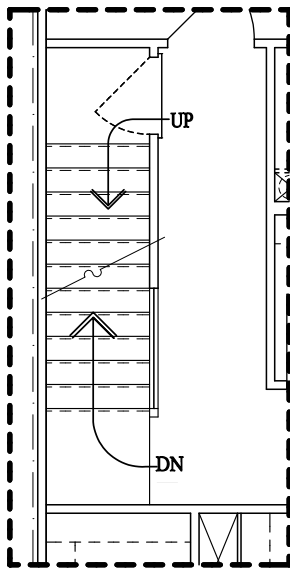
# Optional Layouts



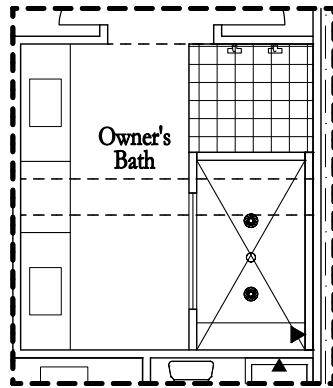
Optional Sliding Door



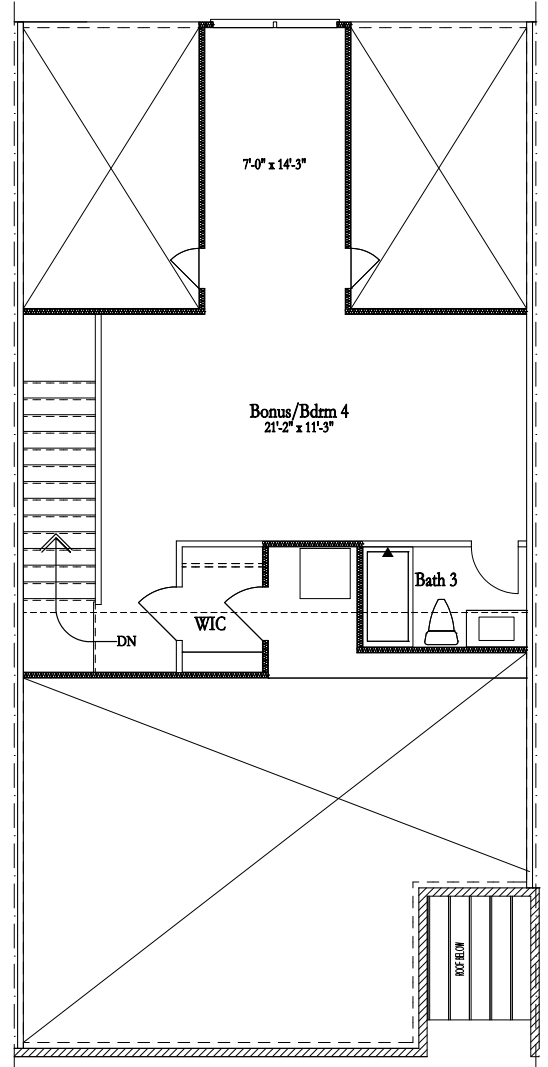
Deluxe Bath Option



Stairs w/ Opt 3rd Flr



Deluxe Shower Option



Optional Third Floor



REV. 8/28/17

© The Providence Group of Georgia, LLC Please refer to actual blueprints for an accurate representation of plan. Floorplans and elevations subject to change without notice. Window, door and porch locations may vary by elevation. Subject to error, omission or withdrawal.

